



Plusline Small

Plusline S 500W R7s 240V 1CT/10X10F

Mains-voltage linear lamp giving white halogen light

Product data

• General Information

Cap-Base	R7S
Bulb Shape	T3 [T 12mm (T3)]
Operating Position	UNIVERSAL [Any or Universal (U)]
Nominal Lifetime (Nom)	2000 h

• Light Technical

Luminous Flux (Nom)	9660 lm
Correlated Color Temperature (Nom)	2900 K
Luminous Efficacy (rated) (Nom)	19.3 lm/W
Color Rendering Index (Nom)	100

• Operating and Electrical

Power (Rated) (Nom)	500 W
Lamp Current (Nom)	2.08 A
Starting Time (Nom)	0.0 s
Voltage (Nom)	240 V

• Controls and Dimming

Dimmable	Yes
----------	-----

• Mechanical and Housing

Bulb Finish	Clear
-------------	-------

• Approval and Application

Energy Efficiency Label (EEL)	D
-------------------------------	---

• Luminaire Design Requirements

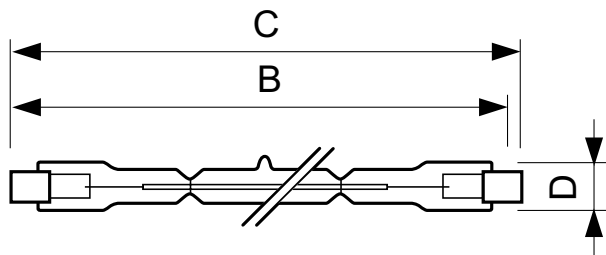
Bulb Temperature (Max)	900 °C
Pinch Temperature (Max)	350 °C

• Product Data

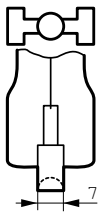
Full product code	872790080905300
Order product name	Plusline S 500W R7s 240V 1CT/10X10F
EAN/UPC - Product	8727900809053
Order code	924735545579
Numerator - Quantity Per Pack	1
Numerator - Packs per outer box	100
Material Nr. (12NC)	924735545579
Net Weight (Piece)	0.010 kg
ILCOS Code	HDG//RS-500-240-R7s-114,2

PHILIPS

Dimensional drawing



R7s



DESmall 500W R7s 240V T3 CL

Product	D	B	B	B	C
Plusline S 500W R7s 240V 1CT/10X10F	12 mm	115.8 mm	114.2 mm	112.6 mm	117.6 mm



© 2015 Philips Lighting Holding B.V.
All rights reserved.

Specifications are subject to change without notice. Trademarks are the property of Koninklijke Philips N.V. (Royal Philips) or their respective owners.

www.philips.com/lighting

2015, December 23
data subject to change