



# Plusline Large

Plusline L 1000W R7s 240V 1CT/10

Mains-voltage linear lamp giving white halogen light

**PHILIPS**

## Product data

### • General Information

Cap-Base	R7S
Bulb Shape	T11 [ T 11mm]
Operating Position	P4 [ Parallel +/-4D or Horizontal(HOR)]
Nominal Lifetime (Nom)	2000 h
Switching Cycle	8000X

### • Light Technical

Luminous Flux (Nom)	21500 lm
Luminous Flux (Rated) (Nom)	21500 lm
Correlated Color Temperature (Nom)	2900 K
Luminous Efficacy (rated) (Nom)	21.5 lm/W
Color Rendering Index (Nom)	100
LLMF At End Of Nominal Lifetime (Min)	80 %

### • Operating and Electrical

Power (Rated) (Nom)	1000.0 W
Lamp Current (Nom)	4.17 A
Starting Time (Nom)	0.0 s
Warm Up Time To 60% Light (Nom)	instant full light
Power Factor (Nom)	1
Voltage (Nom)	240 V

### • Controls and Dimming

Dimmable	Yes
----------	-----

### • Mechanical and Housing

Bulb Finish	Clear
-------------	-------

### • Approval and Application

Energy Efficiency Label (EEL)	B
Energy Consumption kWh/1000 h	1000 kWh

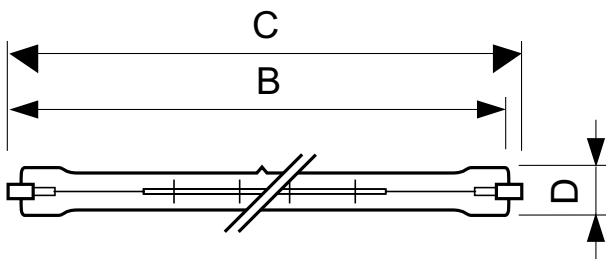
### • Luminaire Design Requirements

Bulb Temperature (Max)	900 °C
Pinch Temperature (Max)	350 °C

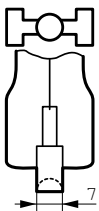
### • Product Data

Full product code	872790080855100
Order product name	Plusline L 1000W R7s 240V 1CT/10
EAN/UPC - Product	8727900808551
Order code	923932145741
Numerator - Quantity Per Pack	1
Numerator - Packs per outer box	10
Material Nr. (12NC)	923932145741
Net Weight (Piece)	0.016 kg
ILCOS Code	HDG//RS-1000-240-R7s-185,7

## Dimensional drawing



R7s, T11/T12



### DEBig 1000W R7s 240V T11 CL

Product	D	B	B	B	C
Plusline L 1000W R7s 240V 1CT/10	11 mm	187.3 mm	185.7 mm	184.1 mm	189.1 mm



© 2016 Philips Lighting Holding B.V.  
All rights reserved.

Specifications are subject to change without notice. Trademarks are the property of Koninklijke Philips N.V. (Royal Philips) or their respective owners.

[www.philips.com/lighting](http://www.philips.com/lighting)

2016, March 7  
data subject to change