

Standard electromagnetic ballast for fluorescent applications

BTA EM ballasts for TL Fluorescent lamps

This efficient, reliable, long-life electromagnetic ballast for TL-D fluorescent lamps features a balanced combination of essential characteristics, thus allowing a wide variety of standard applications.

Benefits

- Reliable electrical and mechanical performance
- Compact dimensions
- Electrical design for optimum lamp performance

Features

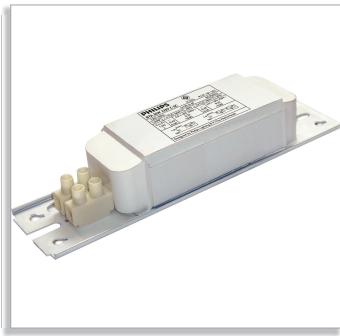
- Long lifetime
- Quick and easy wiring
- Easy to recognize: blue product label
- Tw marking 130 °C (means average lifetime of 10 years' continuous operation @ 130 °C)
- High-quality screw-in or insert contact

Application

- Retail
- Offices
- Industry
- Home

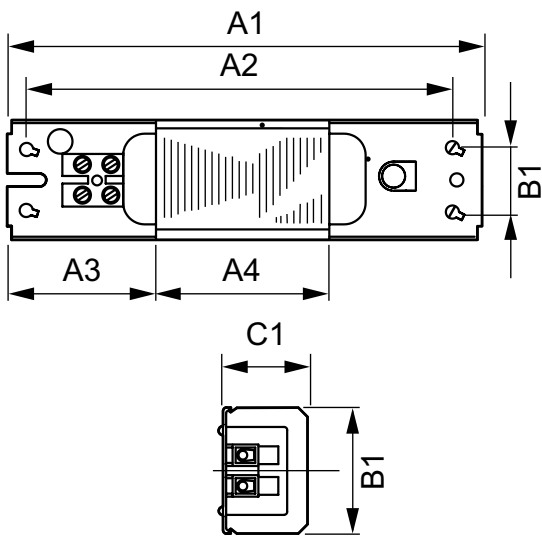
PHILIPS

Related products



BTA B2 DI, B2 SC, B2 'SC, C DI, C SC & C 'SC

Dimensional drawing



BTA 36W 220V B2 DI

Product	D1	C1	C3	A1	A2	A3	A4	B1	B2
BTA 36W 220V B2 DI	4.0 mm	28.0 mm	1.2 mm	155.0 mm	140.0 mm	48.0 mm	60.0 mm	39.0 mm	20.0 mm

Operating and Electrical

order code	Input Frequency	Input Voltage
913710111750	50	230
913710111850	50	230
913710112150	50	230
913710112250	50	230
913710112350	50	240
913710112450	50	240
913710118343	60	220
913710118443	60	220
913710119550	50	220
913710119650	50	220
913710119750	50	220
913710121350	50	220

order code	Input Frequency	Input Voltage
913710124050	50	230
913710124150	50	240

System characteristics

order code	Rated Ballast-Lamp Power
913710111750	18 W
913710111850	36 W
913710112150	18 W
913710112250	36 W
913710112350	18 W

order code	Rated Ballast-Lamp Power
913710112450	36 W
913710118343	18 W
913710118443	36 W
913710119550	36 W
913710119650	36 W
913710119750	18 W
913710121350	36 W
913710124050	58 W
913710124150	58 W

Mechanical and Housing

order code	Housing
913710111750	L155X39X28
913710111850	L155X39X28
913710112150	L155X39X28
913710112250	L155X39X28
913710112350	L155X39X28
913710112450	L155X39X28
913710118343	L155X39X28
913710118443	L155X39X28
913710119550	L155X39X28
913710119650	L155X39X28

order code	Housing
913710119750	L155X39X28
913710121350	L155X39X28
913710124050	L195X39X28
913710124150	L195X39X28

Approval and Application

order code	Energy Efficiency Index
913710111750	C
913710111850	C
913710112150	C
913710112250	C
913710112350	C
913710112450	C
913710118343	C
913710118443	C
913710119550	C
913710119650	C
913710119750	C
913710121350	B2
913710124050	B2
913710124150	B2



© 2016 Philips Lighting Holding B.V.
All rights reserved.

Specifications are subject to change without notice. Trademarks are the property of Koninklijke Philips N.V. (Royal Philips) or their respective owners.

www.philips.com/lighting

2016, August 5
data subject to change